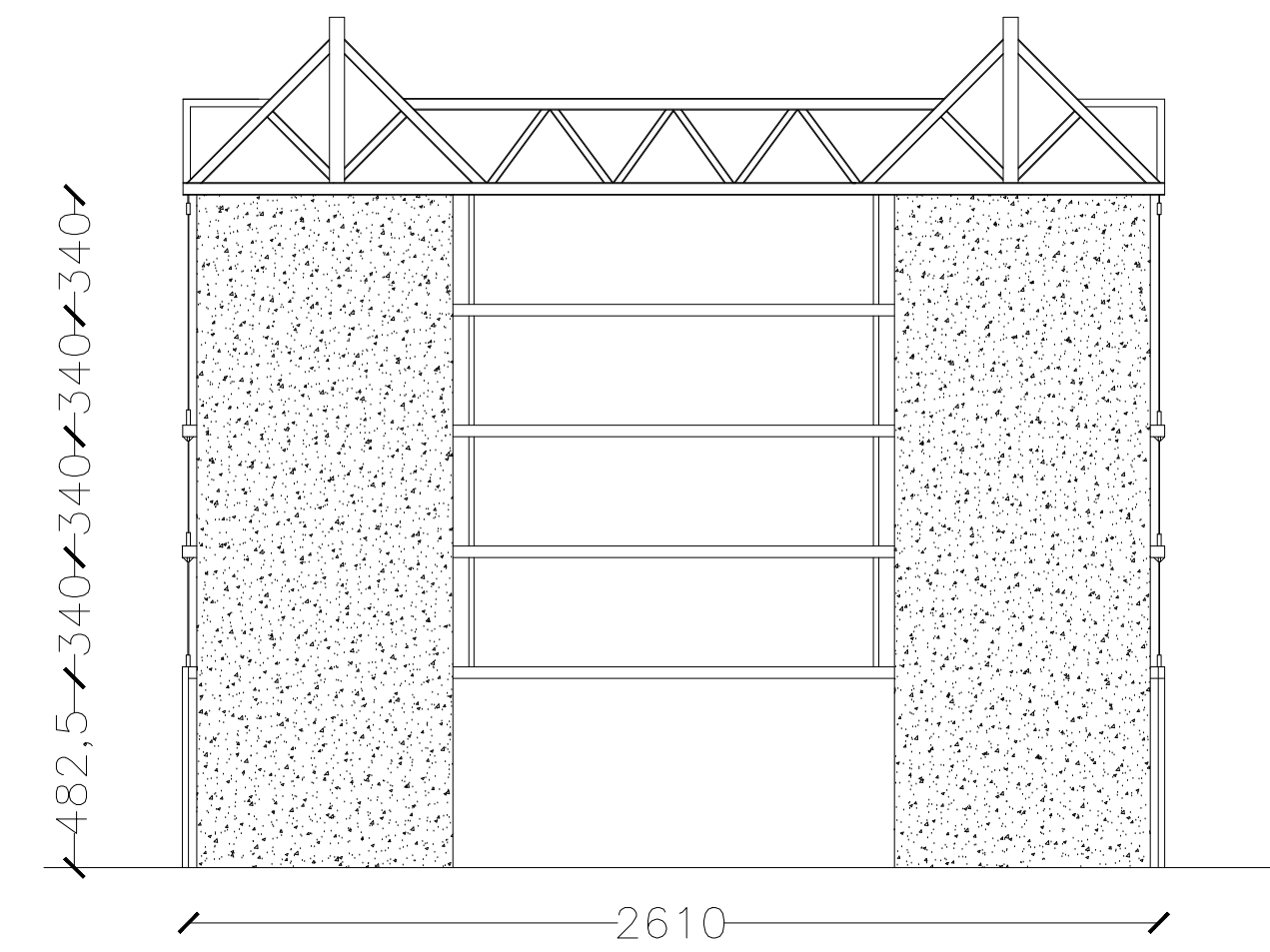
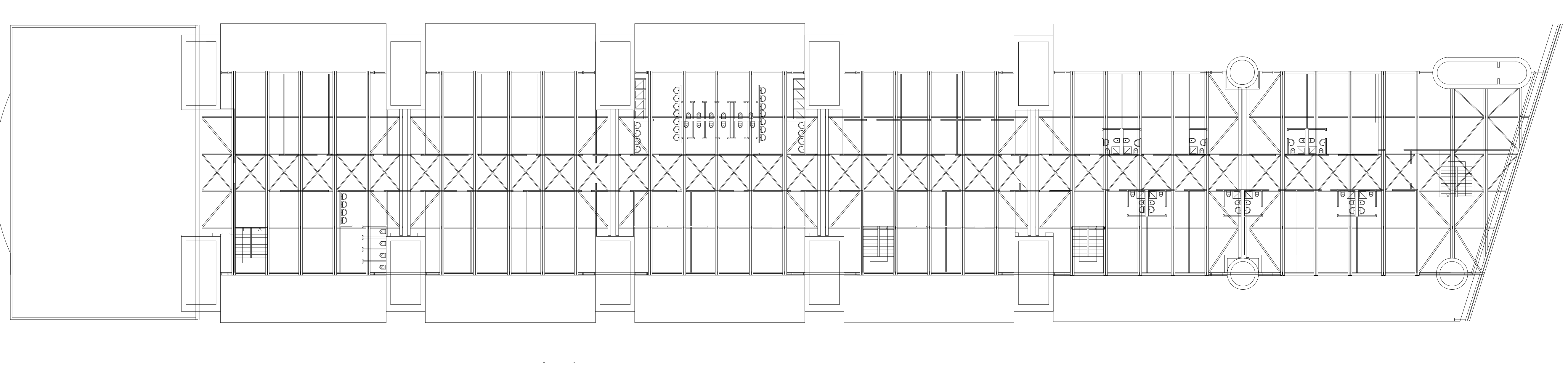
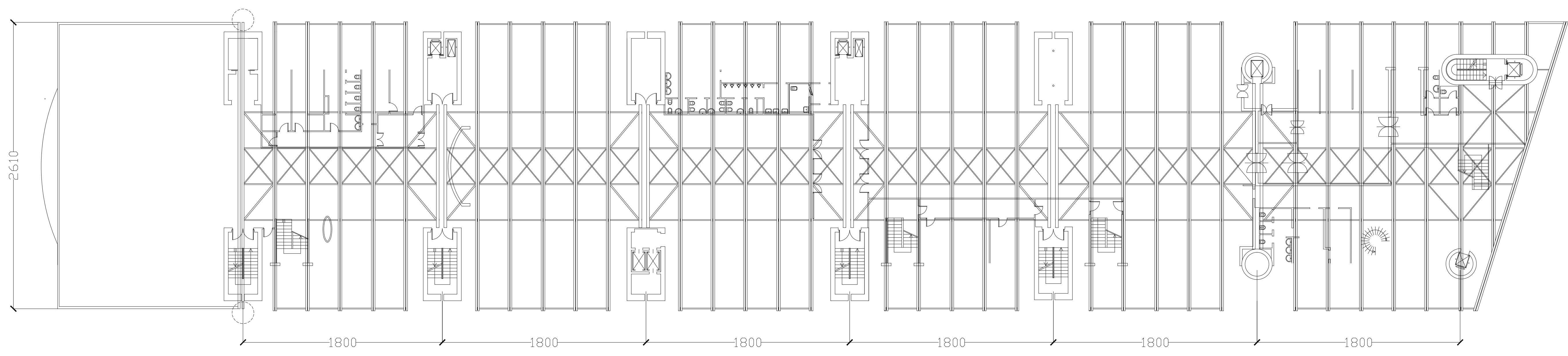
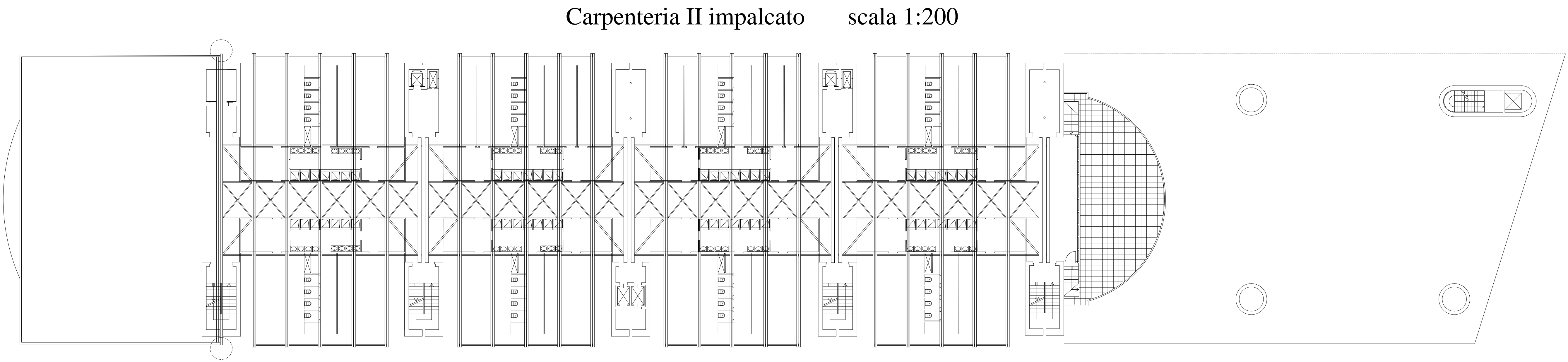
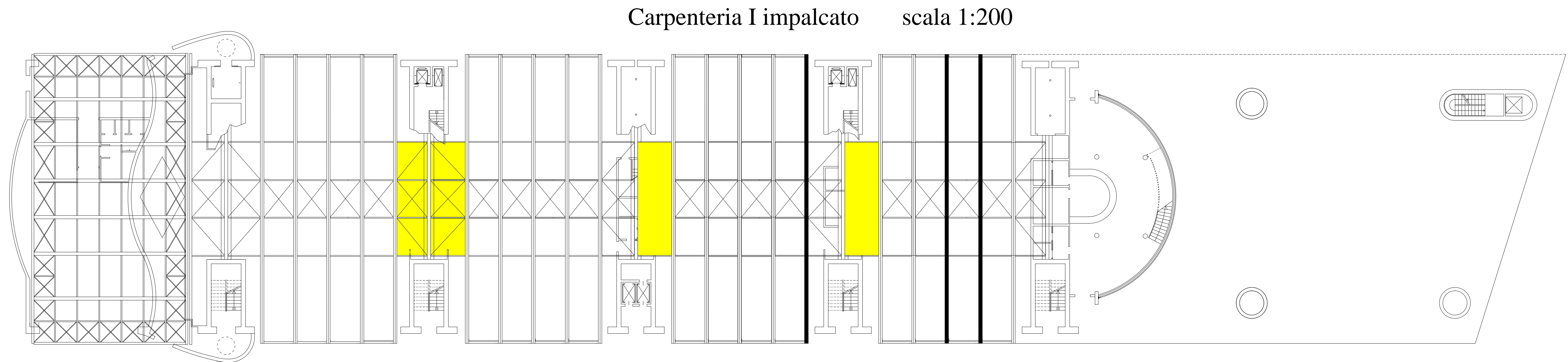
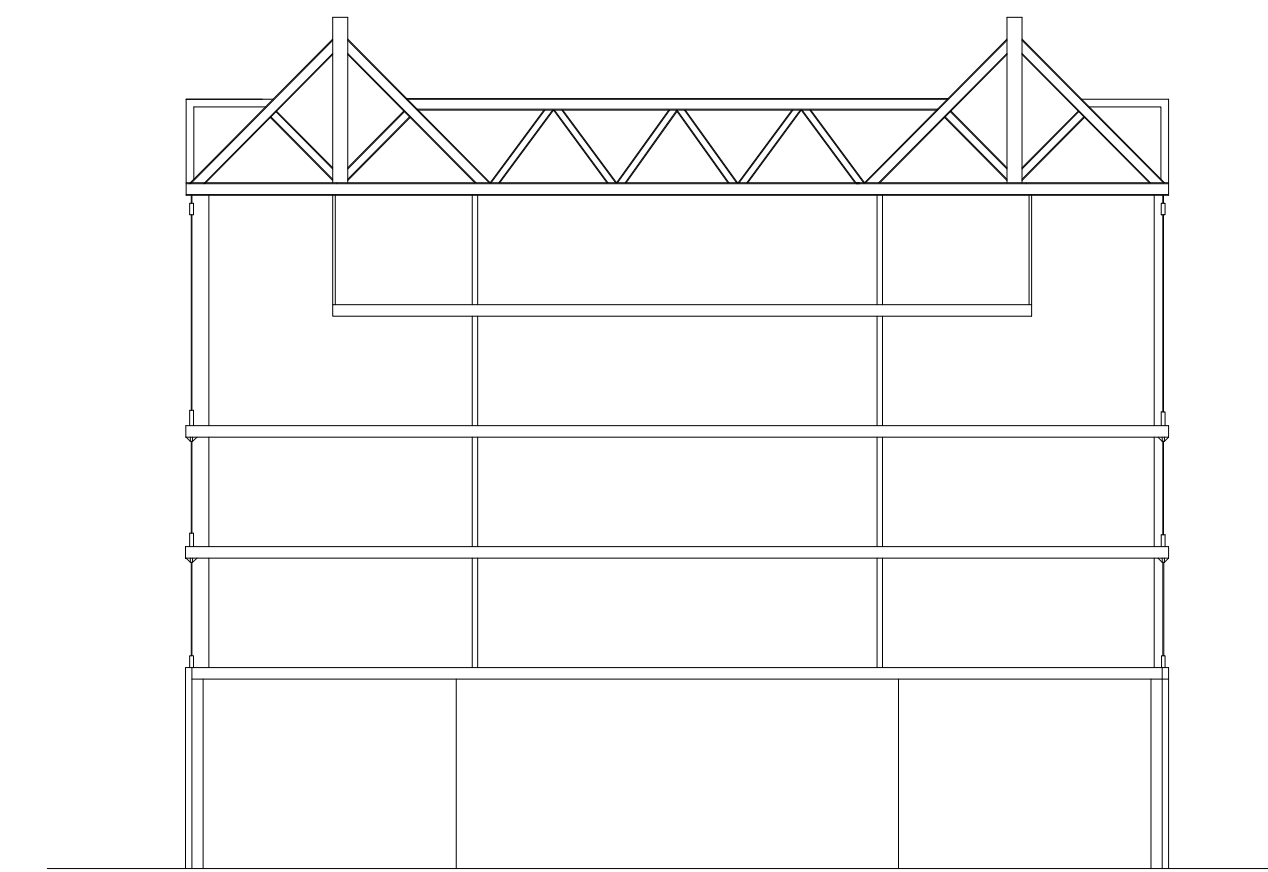


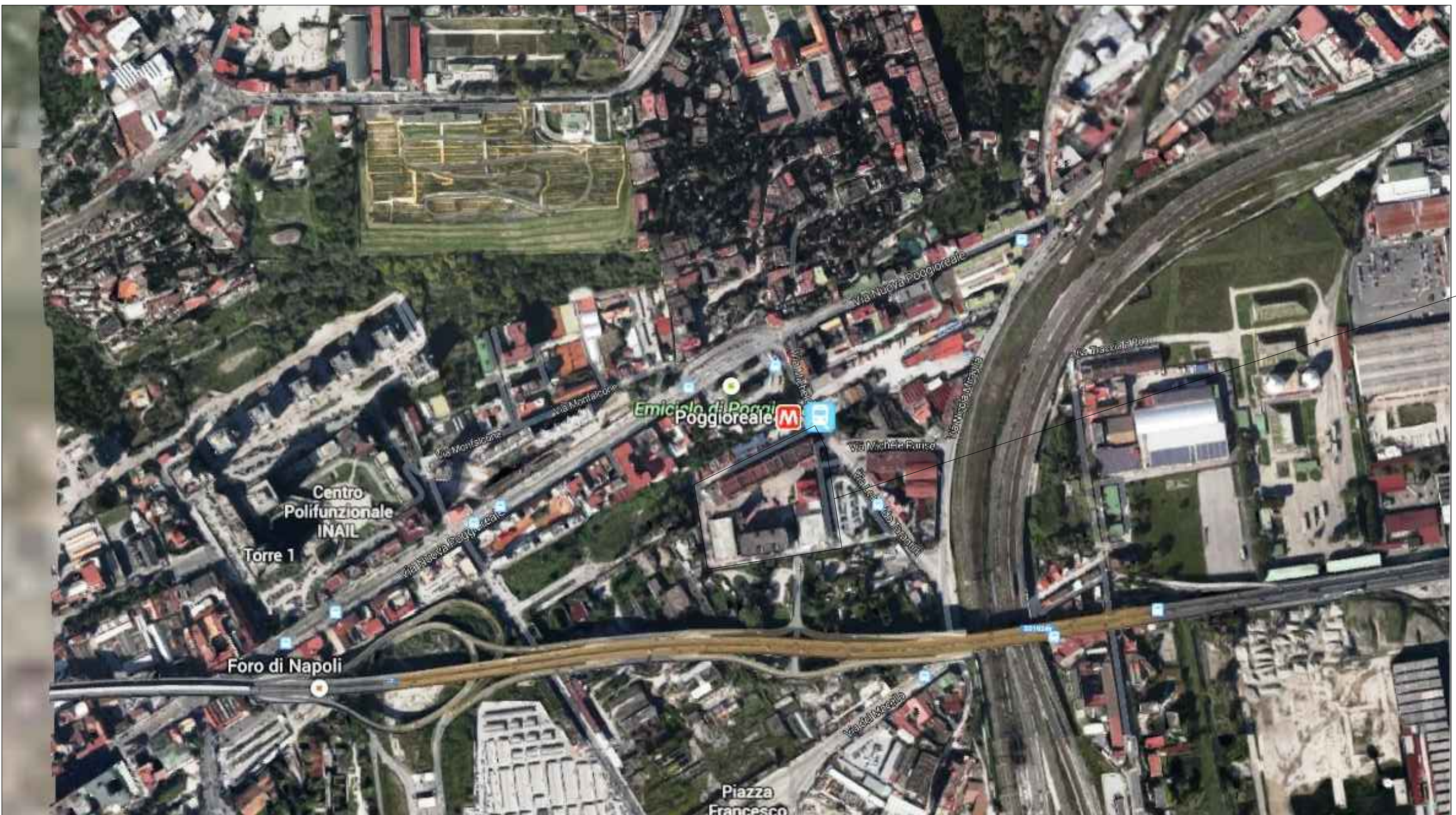
Sezione A-A - vista trasversale scala 1:200



Sezione B-B - vista trasversale scala 1:200



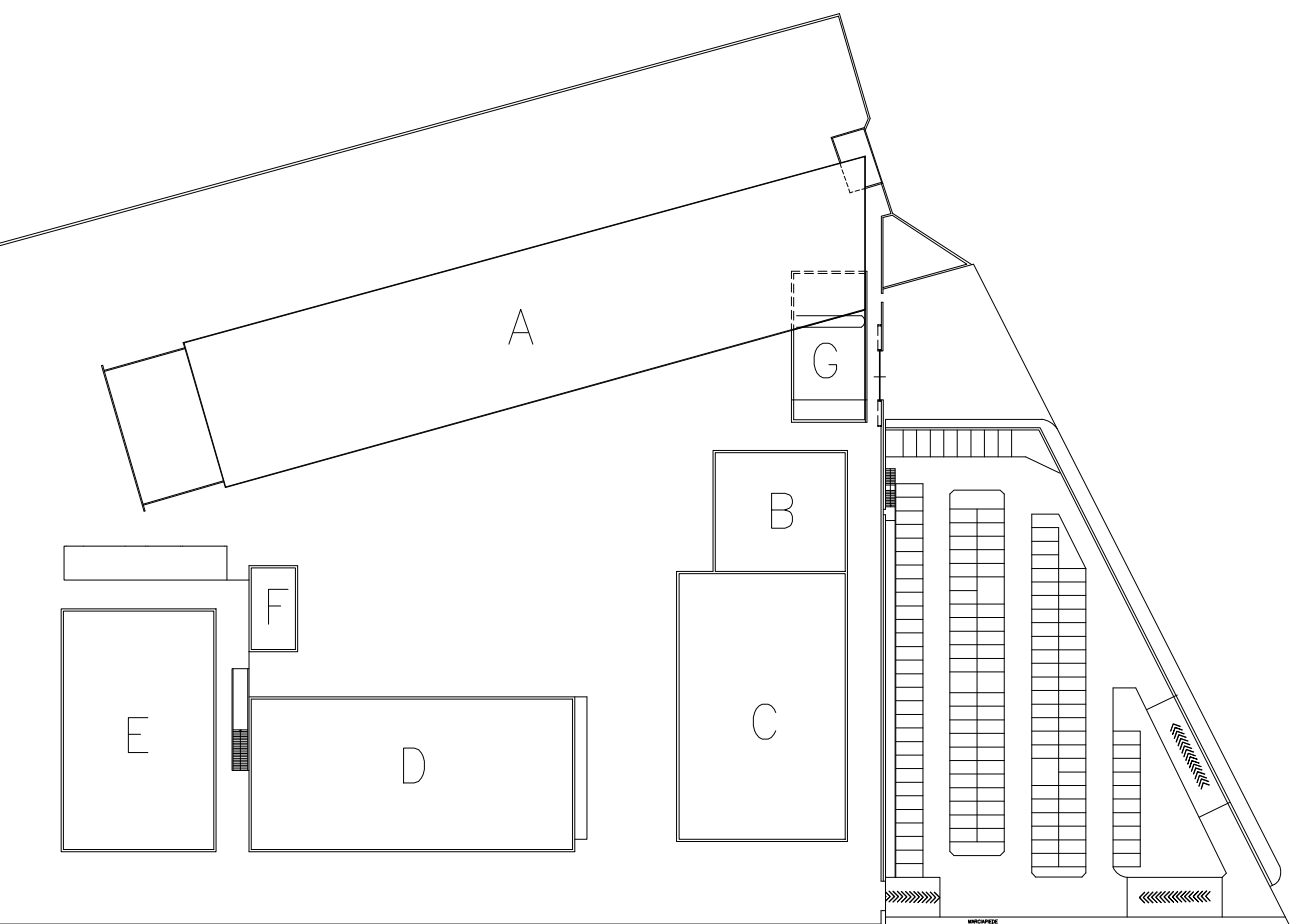
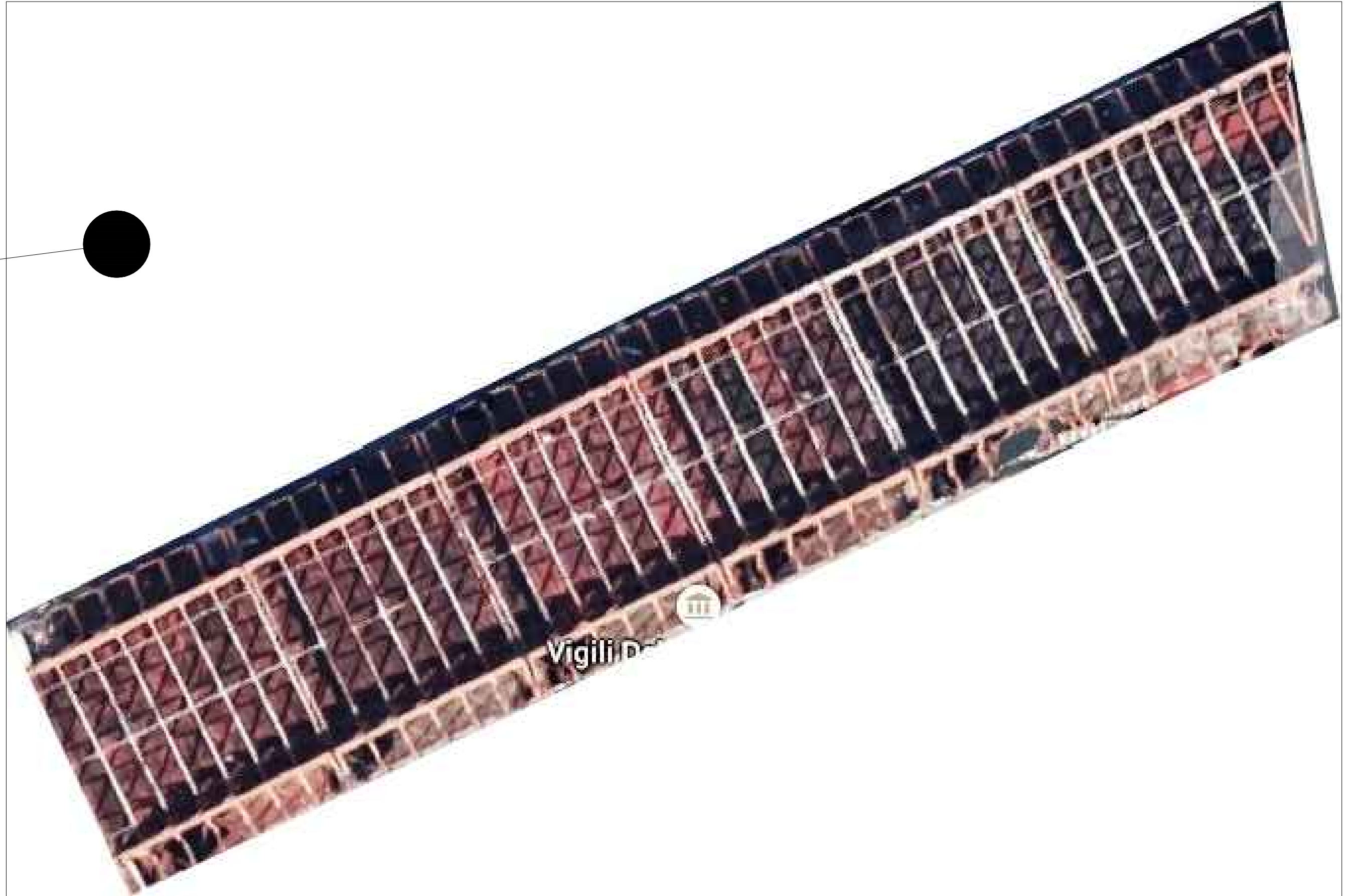
Area di interesse



Comando VVf Napoli Vista Aerea



Edificio "A"



GRANDE PROGETTO RIQUALIFICAZIONE URBANA NAPOLI EST

Realizzazione di sistemi di videosorveglianza e adeguamento della caserma dei Vigili del fuoco

PROGETTO PRELIMINARE

Gruppo di progettazione - Comune di Napoli

Gruppo di progettazione - Comando provinciale Vigili del Fuoco di Napoli

Responsabile del procedimento

Planimetria area di interesse, carpenterie, sezioni longitudinali e trasversali - Edificio A

EG SIS 1 scala: 1:200 gennaio 2015